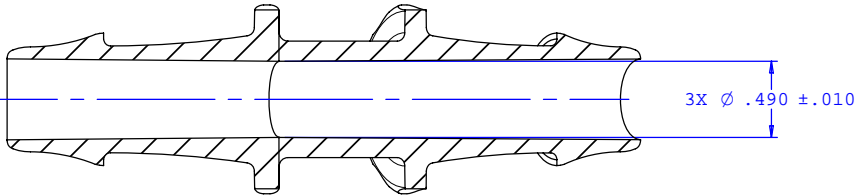
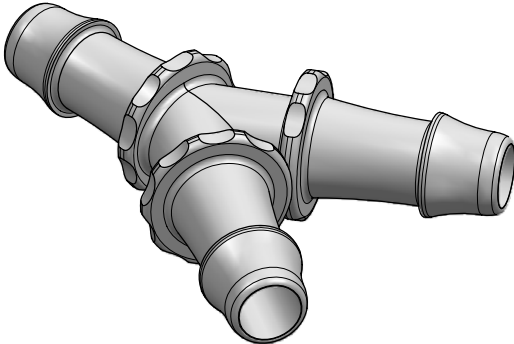
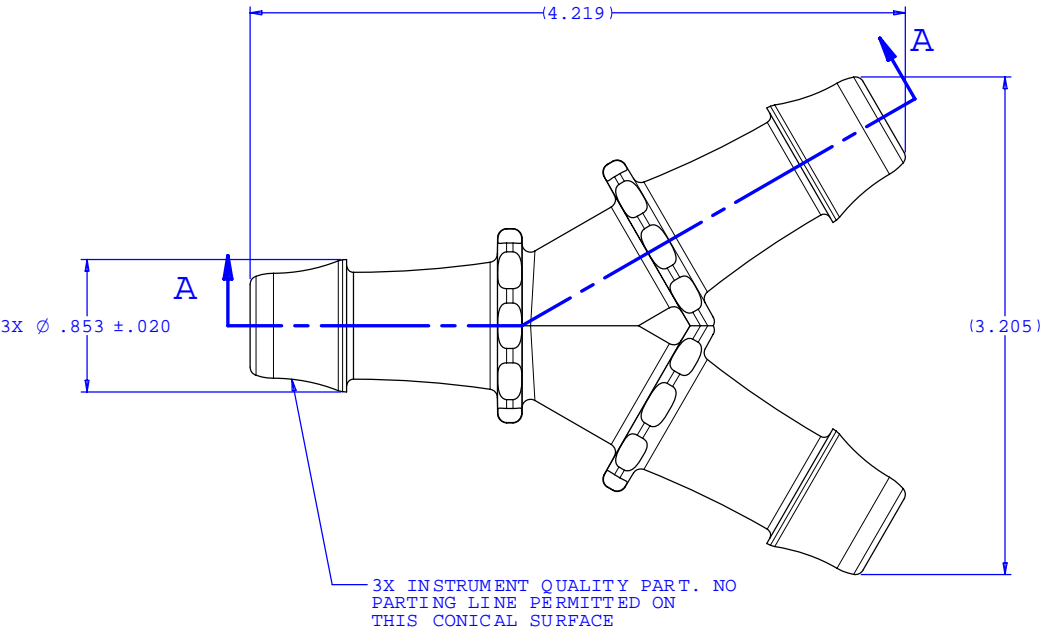


NOTE: FOR MORE DETAILS SEE YOUR V.P.CUSTOMER SERVICE REP.

| REVISIONS | | | |
|-----------|------------------------|----------|----------|
| REV. | DESCRIPTION | DATE | APPROVED |
| A | INITIAL RELEASE | 02-07-03 | |
| B | CO 046 Drafting Update | 08-22-06 | Rick C. |



SECTION A-A

| | | | |
|---|--|--|---------------|
| UNLESS OTHERWISE SPECIFIED DIMENSIONS ARE IN INCHES TOLERANCES ARE: FRACTIONS DECIMALS ANGULAR ± .XX ±.01 ±1° .XXX ±.005 .XXXX ±.001 DO NOT SCALE DRAWING | | VALUE PLASTICS, INC. | |
| | | PART NUMBER: Y100 | |
| DRAWN BY: Frank Lombardi 06-01-06 | | DESCRIPTION: Y Connector with 500 Series Barbs, 3/4" (19 mm) ID Tubing | |
| DATE: Engineer Manager: Rick Cairns | | SIZE: B SCALE: NTS | REV. B |
| | | DRAWING NUMBER: 1008944 | |
| | | © 2006 VALUE PLASTICS, INC. | SHEET: 1 OF 1 |

FOR REFERENCE ONLY