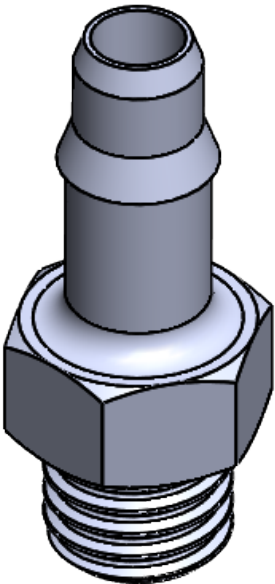
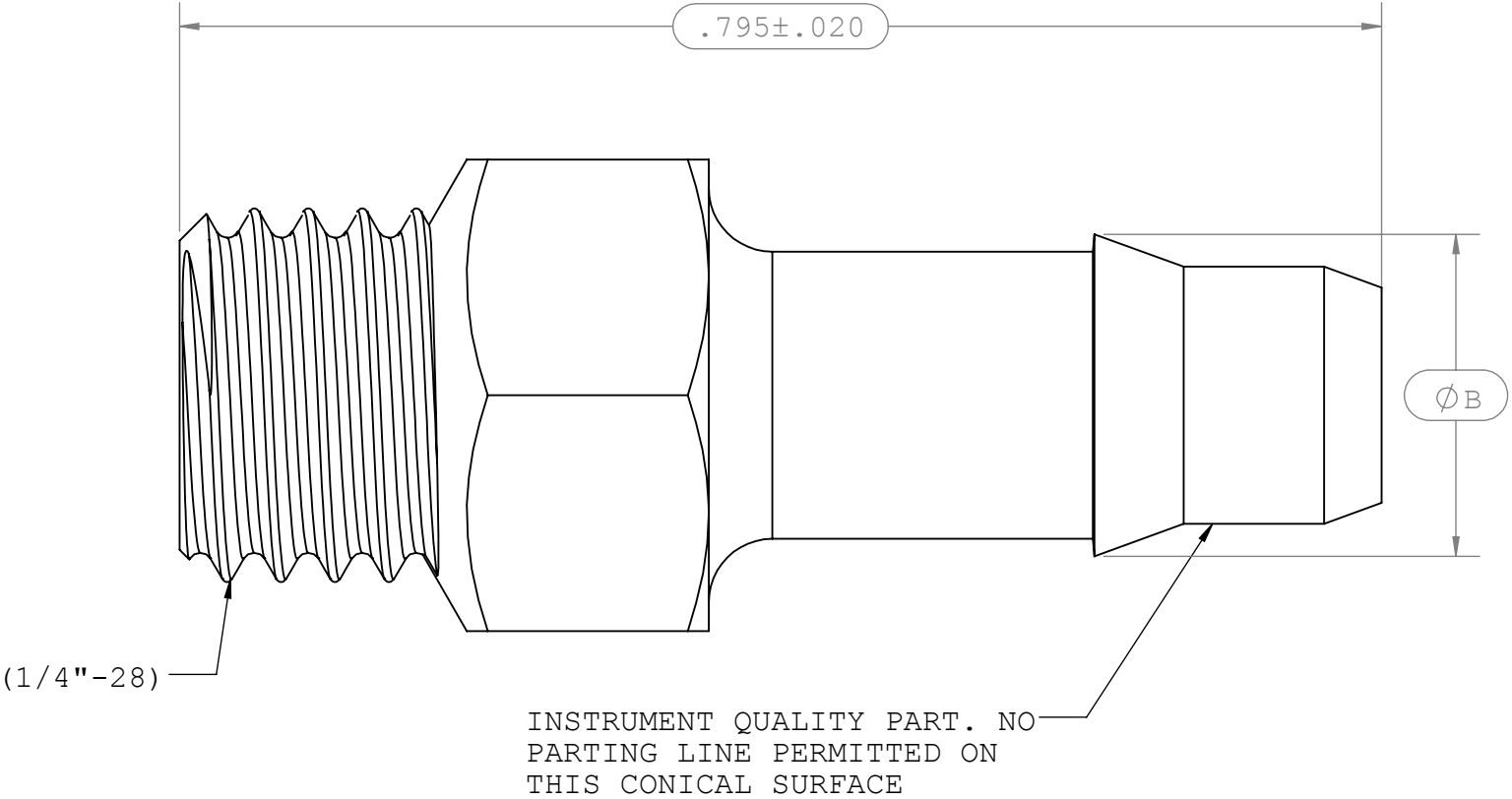
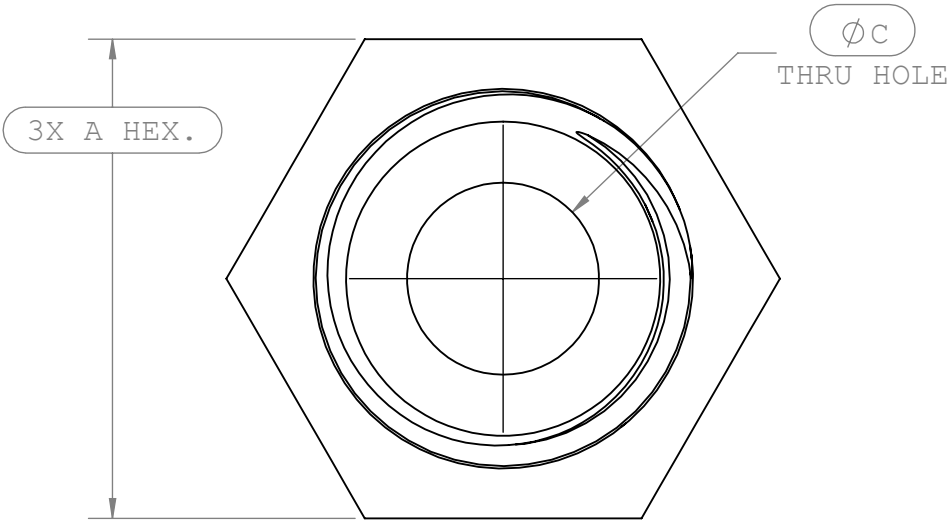


NOTES: 1.FOR ADDITIONAL DETAILS, PLEASE CONTACT VP NEW PRODUCT DEVELOPMENT
2.DIMENSIONS MARKED ARE CONTROL DIMENSIONS
3.VERIFY THREAD USING 1/4"-28 PD .2258 GO THREAD GAUGE

REVISIONS			
REV.	DESCRIPTION	DATE	APPROVED
A	INITIAL RELEASE	06-17-05	
B	CO 031 DRAFTING UPDATE	01-17-06	RICK C.
C	ECO 358	03-20-17	FJL



	Material Specific Tolerances							
Dimension	Acetal	Nylon	PP	ABS	PC	PVC	Polysulfone	Kynar
A	.312	.312	.312	.312	.312	.312	.312	.305
B	.213	.213	.213	.213	.213	.213	.213	.208
C	.125	.125	.125	.125	.125	.125	.125	.120
D								
E								
F								

UNLESS OTHERWISE SPECIFIED DIMENSIONS ARE IN INCHES TOLERANCES ARE: FRACTIONS DECIMAL ANGULAR ± ± 1° .XX ±.01 .XXX ±.005 .XXXX ±.001 DO NOT SCALE DRAWING		VALUE PLASTICS, INC					
		PART NUMBER: S445					
		DESCRIPTION: 1/4"-28 THREAD WITH 5/16" HEX TO 400 SERIES BARB, .170" (4.25 mm) ID TUBING					
DRAWN BY: BRYCE HIRSCHFELD		DATE: 3/31/2017	SIZE: B	SCALE: NTS	VER: 	DWG. NO. 1007767	REV C
MANAGER: DOUG KIMMEL			© 2014 VALUE PLASTICS, INC				SHEET: 1 OF 1

FOR REFERENCE ONLY