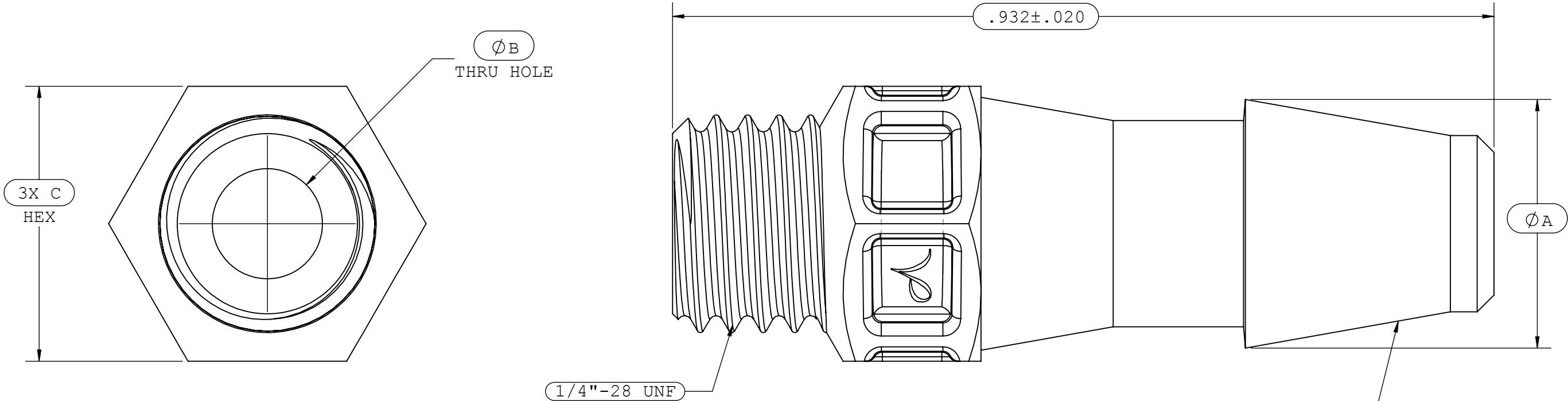
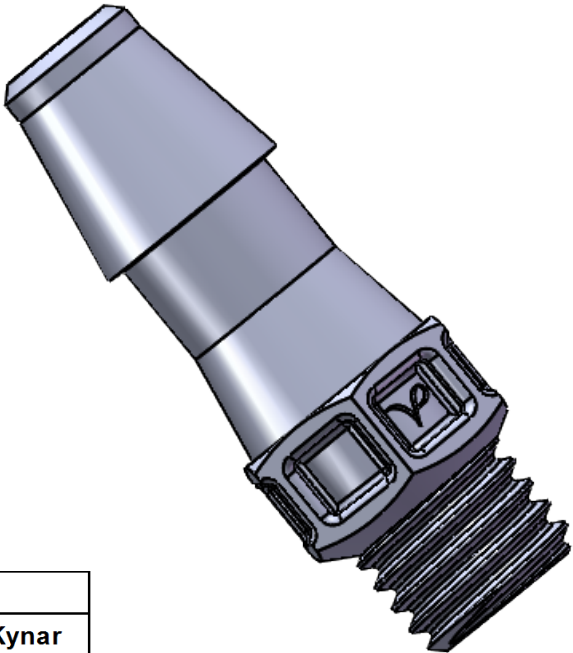


NOTES: 1.FOR ADDITIONAL DETAILS, PLEASE CONTACT VP NEW PRODUCT DEVELOPMENT
2.DIMENSIONS MARKED ARE CONTROL DIMENSIONS
3.VERIFY THREAD USING 1/4"-28 PD .2258 GO THREAD GAUGE

REVISIONS			
REV.	DESCRIPTION	DATE	APPROVED
A	INITIAL RELEASE	06-11-98	
B	CO 018 DRAFTING UPDATE	08-18-05	Rick C.
C	ECO 285 ECO 358	02-08-17	FJL



INSTRUMENT QUALITY PART.
NO PARTING LINE PERMITTED
ON THIS CONICAL SURFACE.



	Material Specific Tolerances							
Dimension	Acetal	Nylon	PP	ABS	PC	PVC	Polysulfone	Kynar
A	.282	.275	.277	.282	.282	.282	.282	.271
B	.125	.121	.125	.125	.125	.125	.125	.121
C	.312	.312	.312	.312	.312	.312	.312	.307
D								
E								
F								

UNLESS OTHERWISE SPECIFIED DIMENSIONS ARE IN INCHES TOLERANCES ARE: FRACTIONS DECIMAL ANGULAR ± ± ± .XX ±.01 ± 1° .XXX ±.005 .XXXX ±.001 DO NOT SCALE DRAWING		VALUE PLASTICS, INC				
		PART NUMBER: S250				
		DESCRIPTION: 1/4-28 UNF Thread with 5/16" Hex to 200 Series Barb, 3/16" (4.8 mm) ID Tubing				
DRAWN BY: shannond	DATE: 3/28/2017	SIZE: B	SCALE: NTS	VER: 	DWG. NO. 1006895	REV C
MANAGER: huadong.lou		© 2011 VALUE PLASTICS, INC				SHEET: 1 OF 1

FOR REFERENCE ONLY