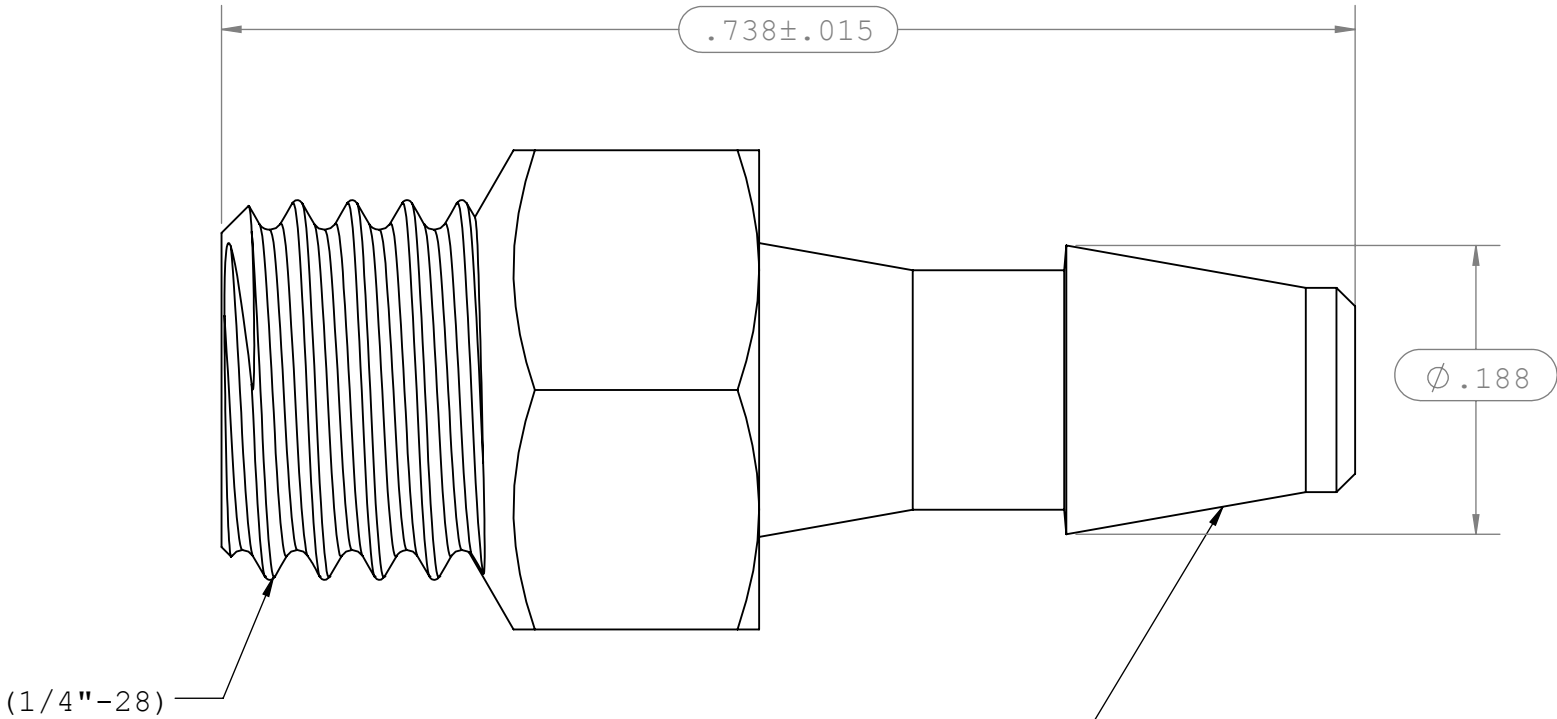
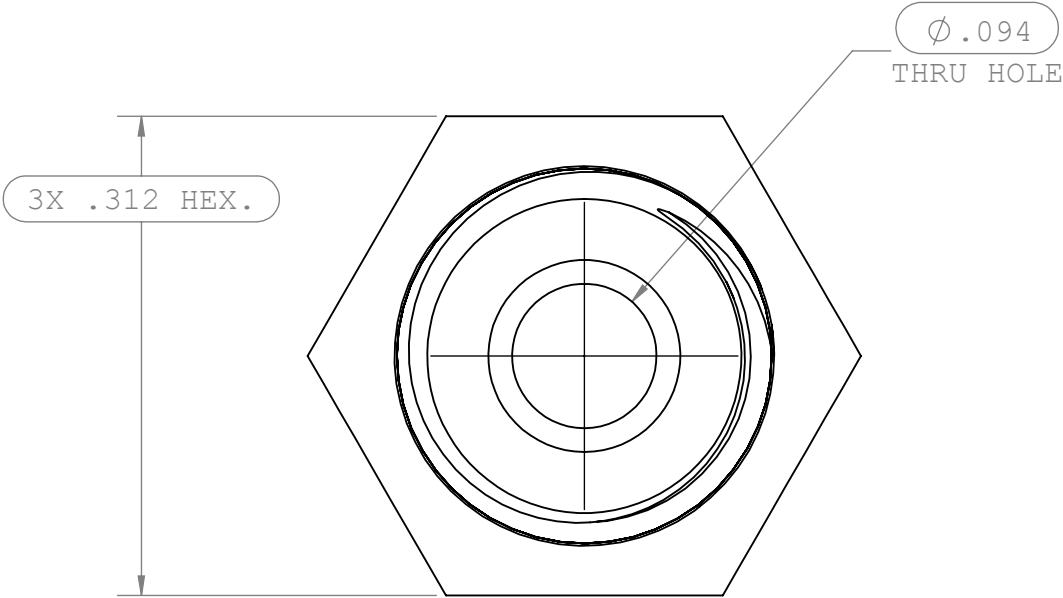
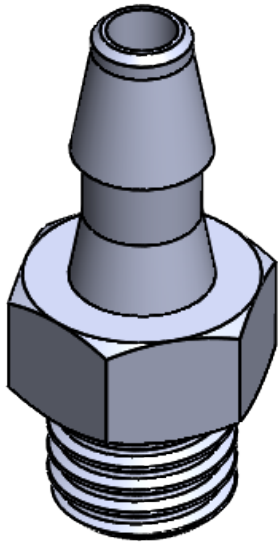


NOTES: 1.FOR ADDITIONAL DETAILS, PLEASE CONTACT VP NEW PRODUCT DEVELOPMENT  
2.DIMENSIONS MARKED   ARE CONTROL DIMENSIONS  
3.VERIFY THREAD USING 1/4"-28 PD .2258 GO THREAD GAUGE

| REVISIONS |                       |          |          |
|-----------|-----------------------|----------|----------|
| REV.      | DESCRIPTION           | DATE     | APPROVED |
| A         | INITIAL RELEASE       | 08-22-02 |          |
| B         | CO 031 DRAFTNG UPDATE | 01-17-06 | RICK C.  |
| C         | ECO 358               | 03-20-17 | FJL      |



INSTRUMENT QUALITY PART. NO  
PARTING LINE PERMITTED ON  
THIS CONICAL SURFACE



|  |                    |   |               |                  |                     |
|--|--------------------|---|---------------|------------------|---------------------|
| UNLESS OTHERWISE SPECIFIED<br>DIMENSIONS ARE IN INCHES<br>TOLERANCES ARE:<br><br>FRACTIONS    DECIMAL    ANGULAR<br>±            .XX ±.01            ± 1°<br>.XXX ±.005<br>.XXXX ±.001<br><br>DO NOT SCALE DRAWING |                    | <b>VALUE PLASTICS, INC</b>  |               |                  |                     |
|  |                    | PART NUMBER: S230   |               |                  |                     |
|  |                    | DESCRIPTION: 1/4"-28 THREAD WITH 5/16" HEX TO 200<br>SERIES BARB, 1/8" (3 mm) ID TUBING |               |                  |                     |
| DRAWN BY:<br>BRYCE HIRSCHFELD  | DATE:<br>3/31/2017 | SIZE:<br><b>B</b>   | SCALE:<br>NTS | VER:<br>         | DWG. NO.<br>1007774 |
| MANAGER:<br>DOUG KIMMEL  |                    | © 2014 VALUE PLASTICS, INC  |               |                  | REV<br>C            |
|  |                    |   |               | SHEET:<br>1 OF 1 |                     |

FOR REFERENCE ONLY